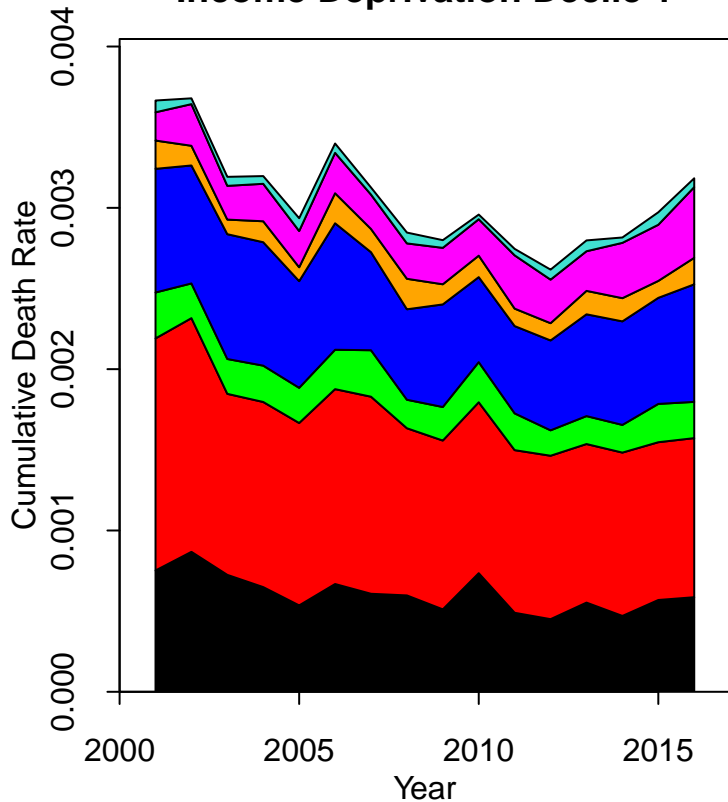
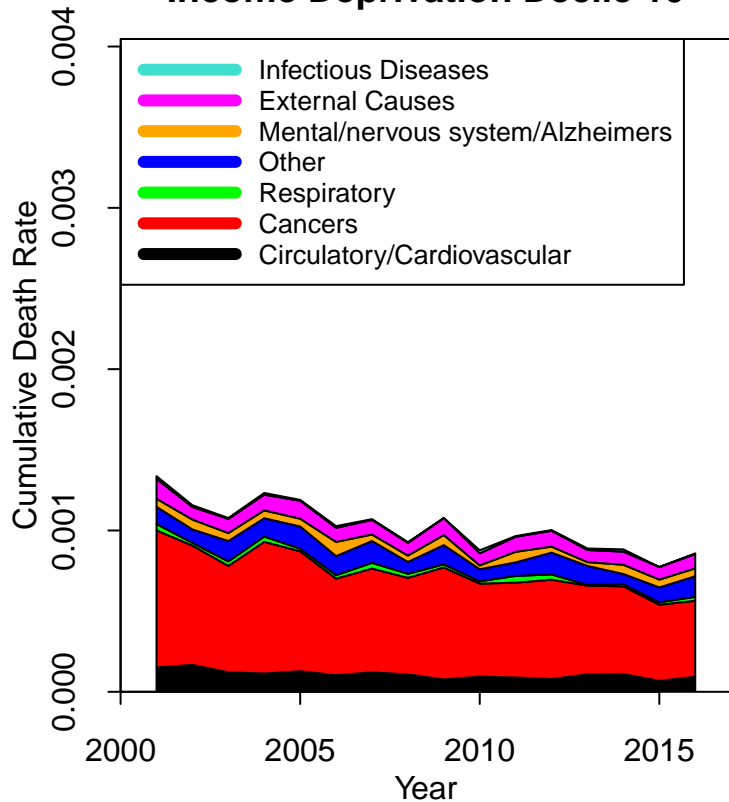


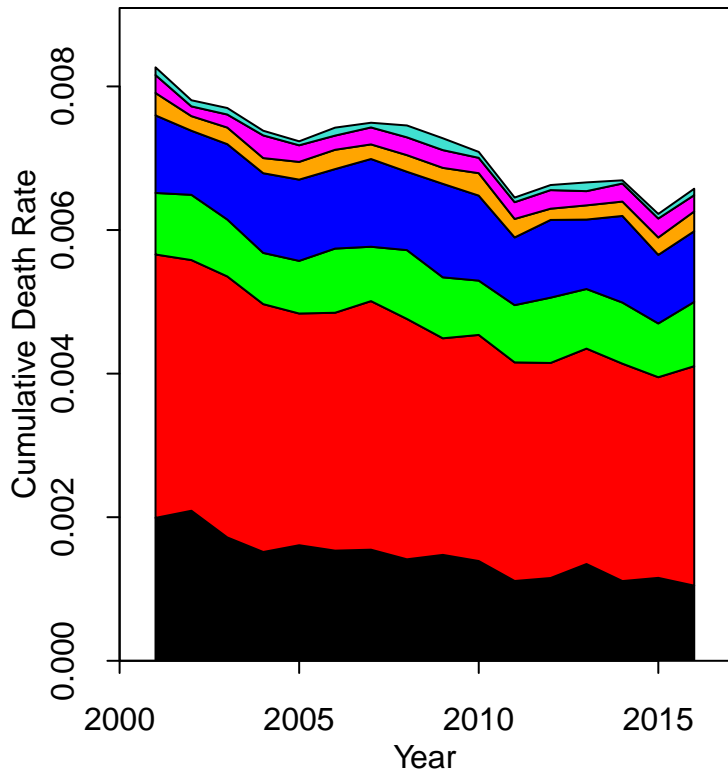
**Decomposition of Death Rates for
Females Aged 45–49
Income Deprivation Decile 1**



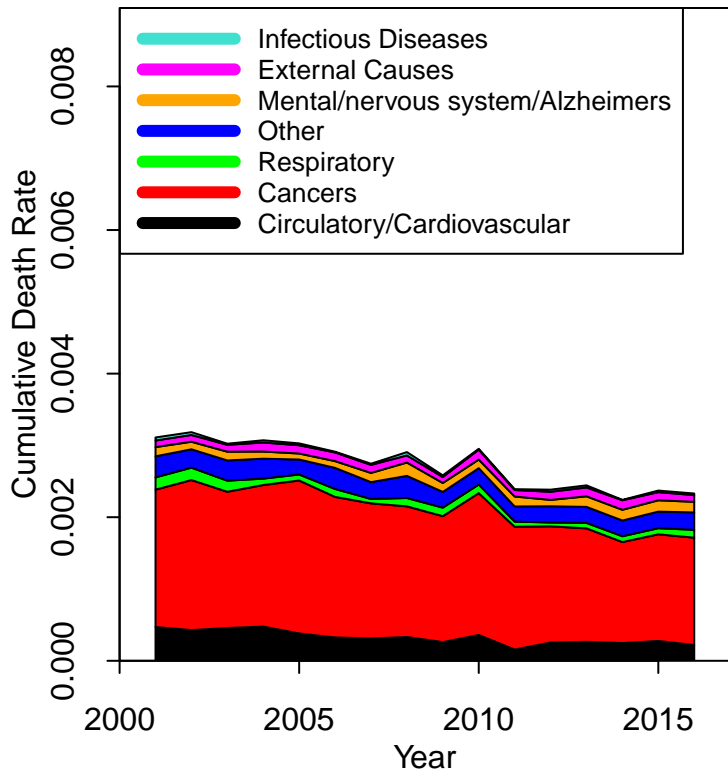
**Decomposition of Death Rates for
Females Aged 45–49
Income Deprivation Decile 10**



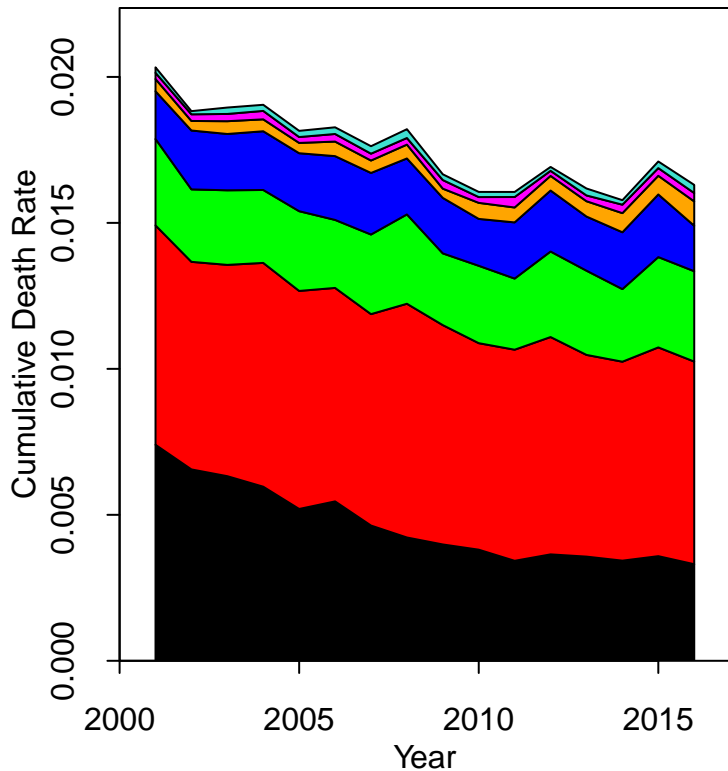
**Decomposition of Death Rates for
Females Aged 55–59
Income Deprivation Decile 1**



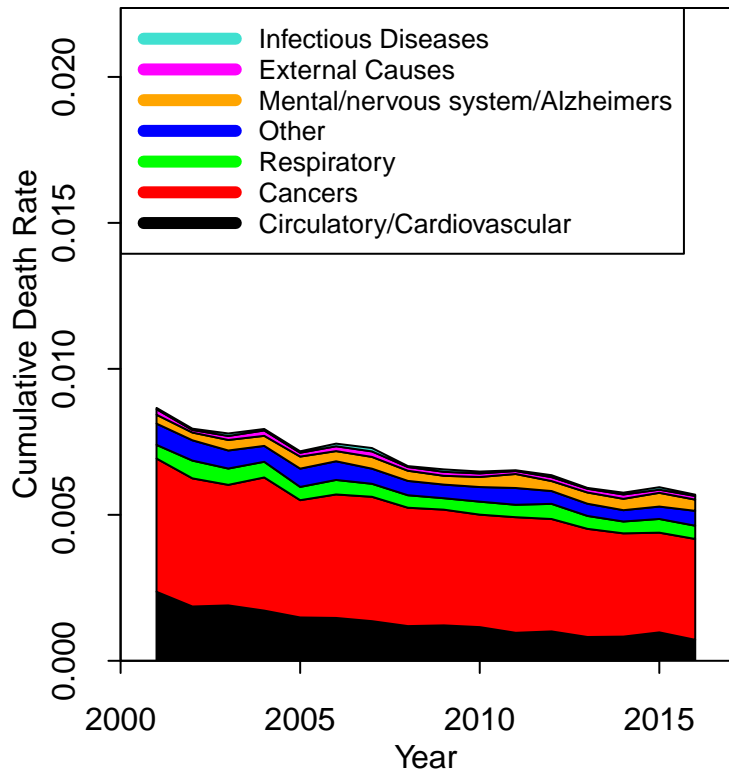
**Decomposition of Death Rates for
Females Aged 55–59
Income Deprivation Decile 10**



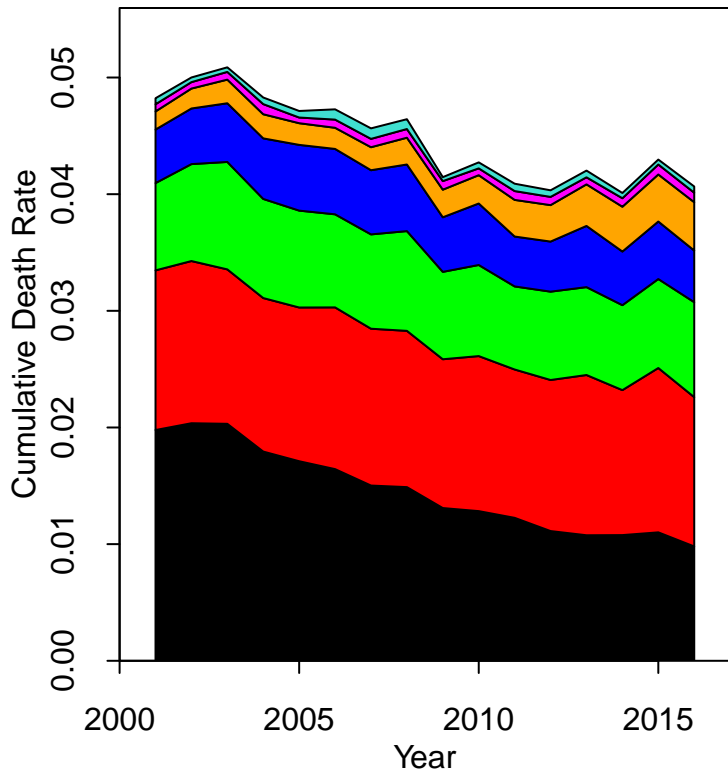
**Decomposition of Death Rates for
Females Aged 65–69
Income Deprivation Decile 1**



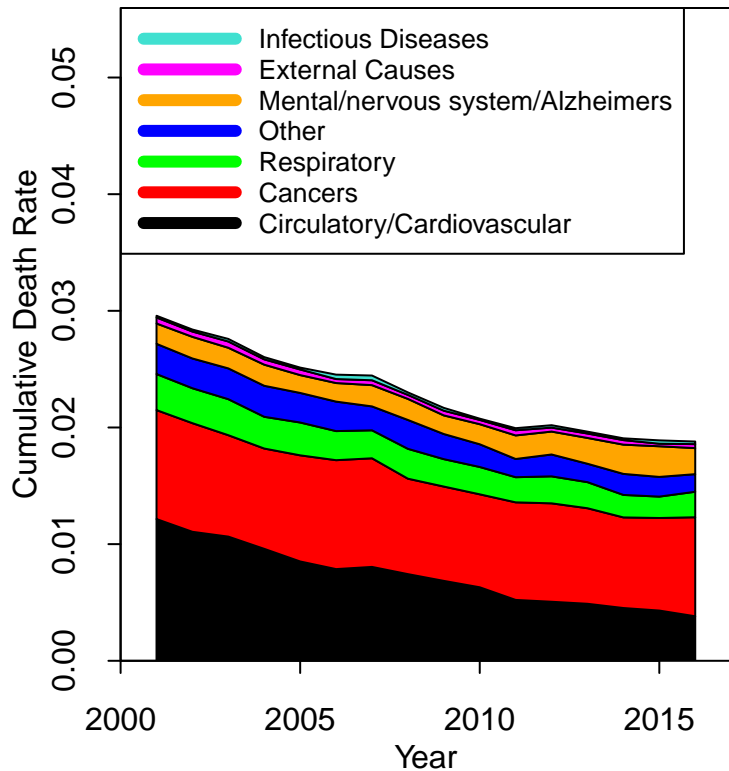
**Decomposition of Death Rates for
Females Aged 65–69
Income Deprivation Decile 10**



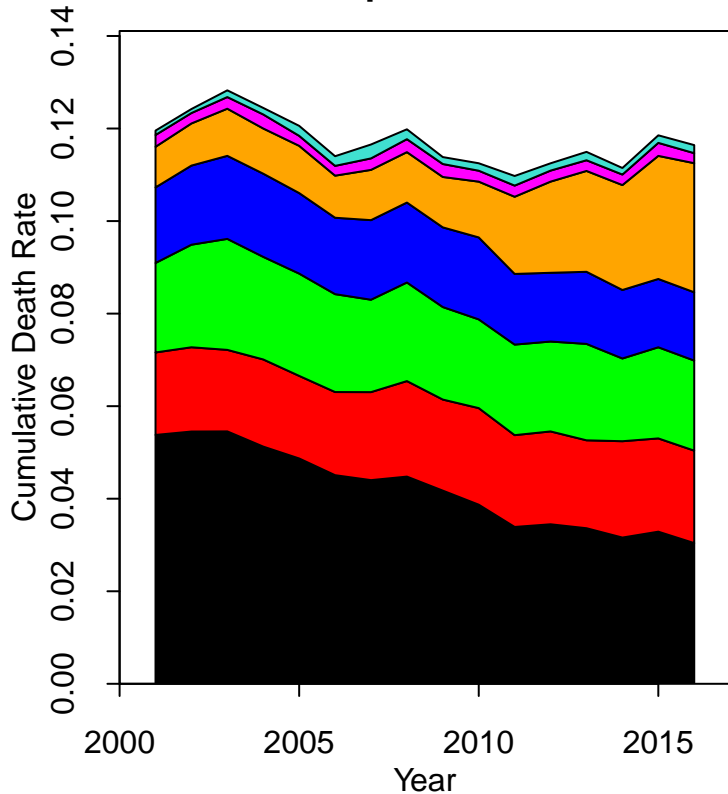
**Decomposition of Death Rates for
Females Aged 75–79
Income Deprivation Decile 1**



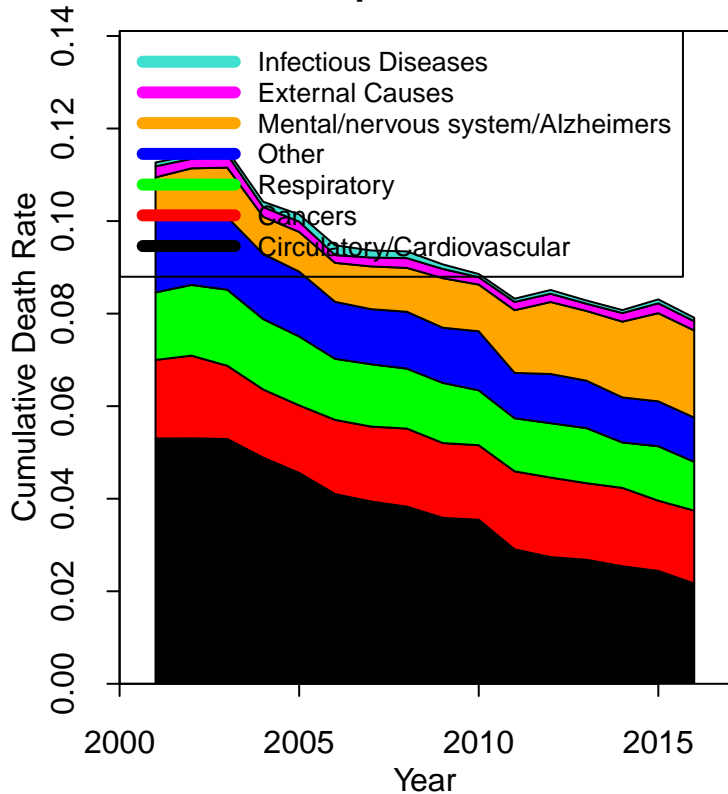
**Decomposition of Death Rates for
Females Aged 75–79
Income Deprivation Decile 10**



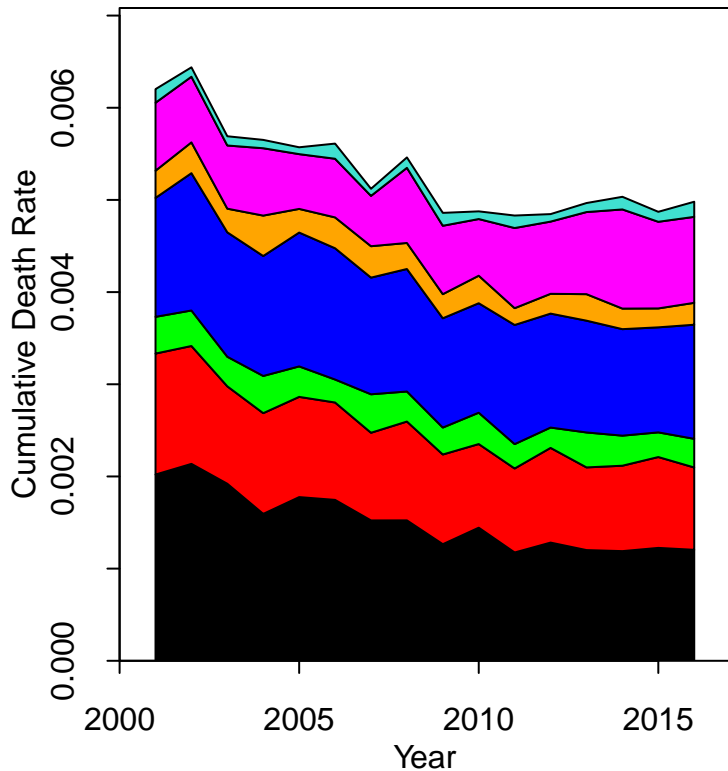
**Decomposition of Death Rates for
Females Aged 85–89
Income Deprivation Decile 1**



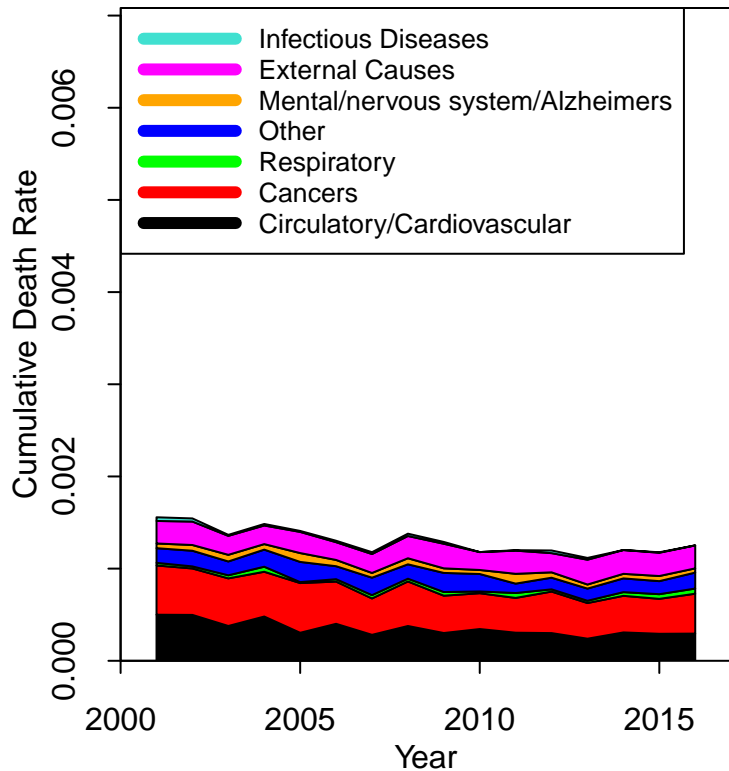
**Decomposition of Death Rates for
Females Aged 85–89
Income Deprivation Decile 10**



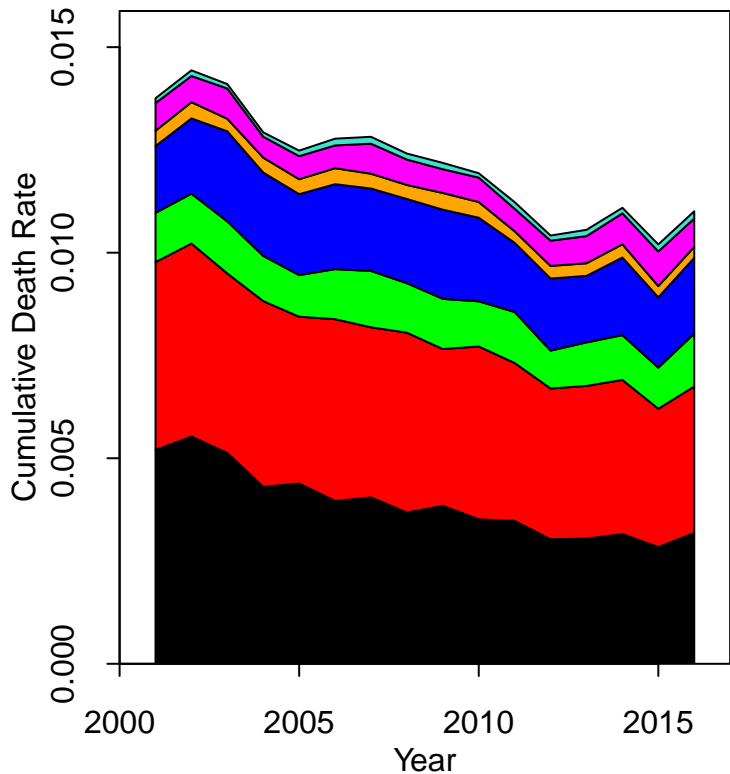
**Decomposition of Death Rates for
Males Aged 45–49
Income Deprivation Decile 1**



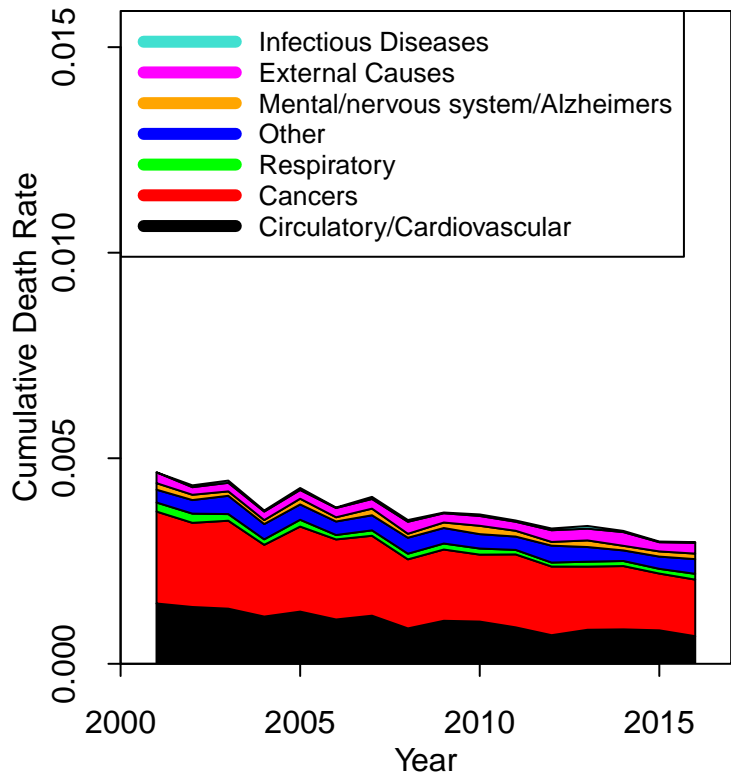
**Decomposition of Death Rates for
Males Aged 45–49
Income Deprivation Decile 10**



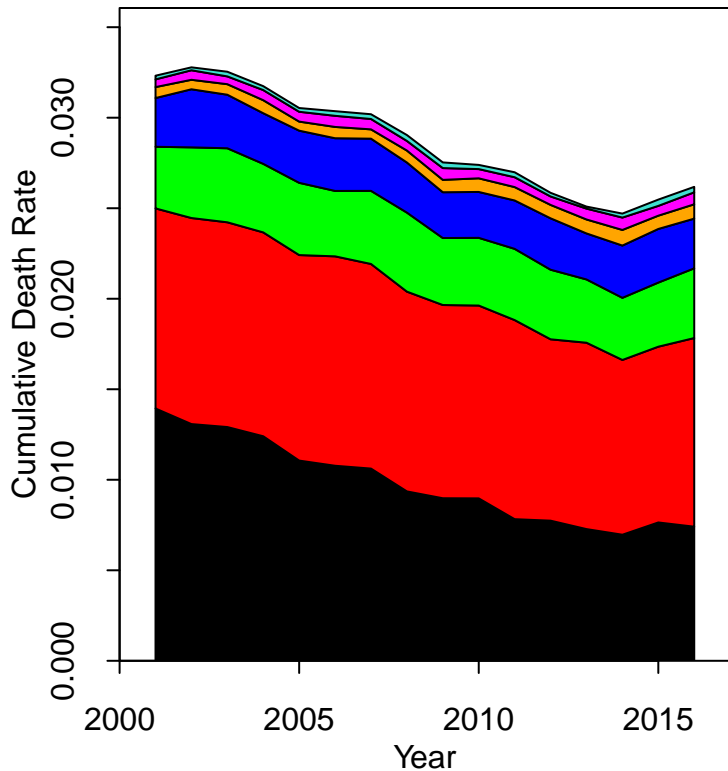
**Decomposition of Death Rates for
Males Aged 55–59
Income Deprivation Decile 1**



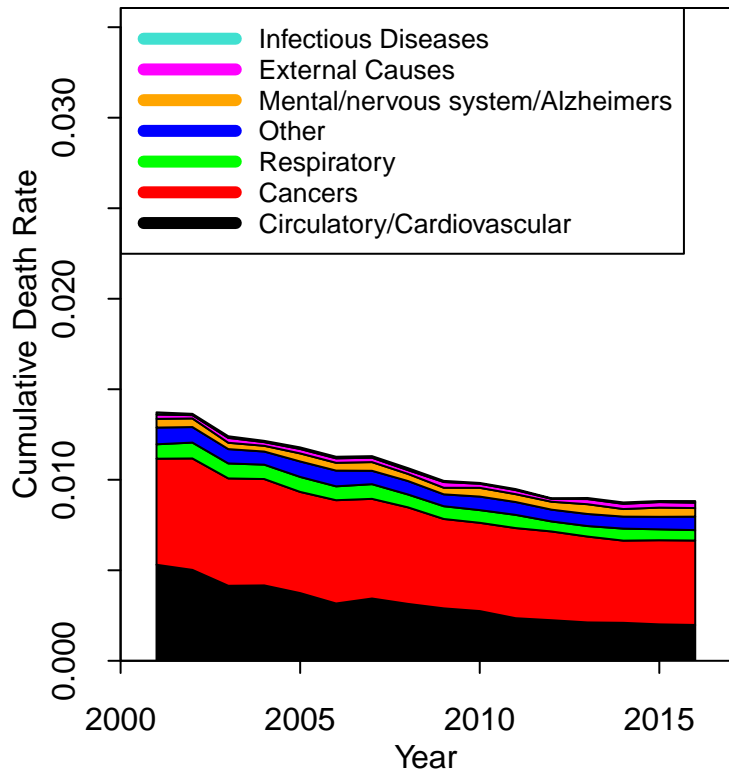
**Decomposition of Death Rates for
Males Aged 55–59
Income Deprivation Decile 10**



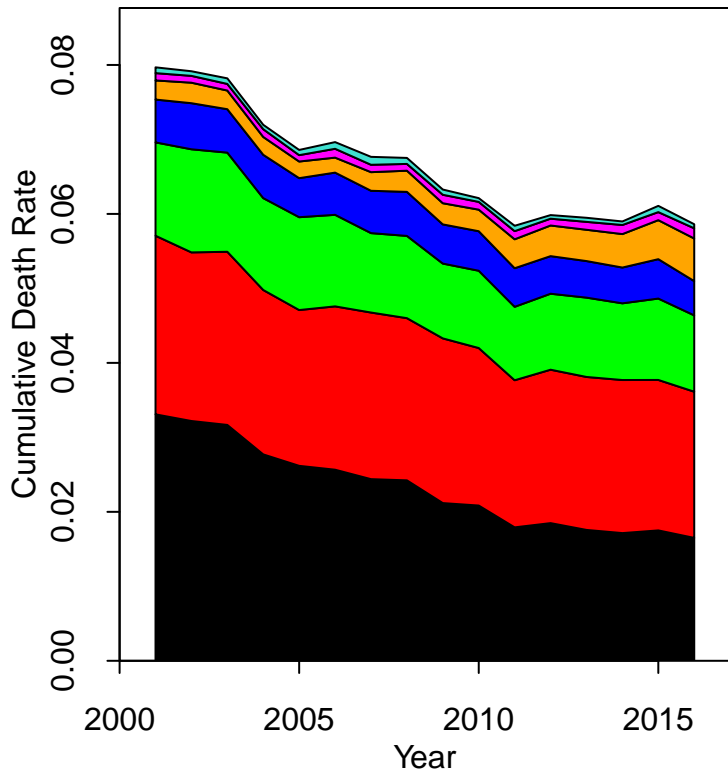
**Decomposition of Death Rates for
Males Aged 65–69
Income Deprivation Decile 1**



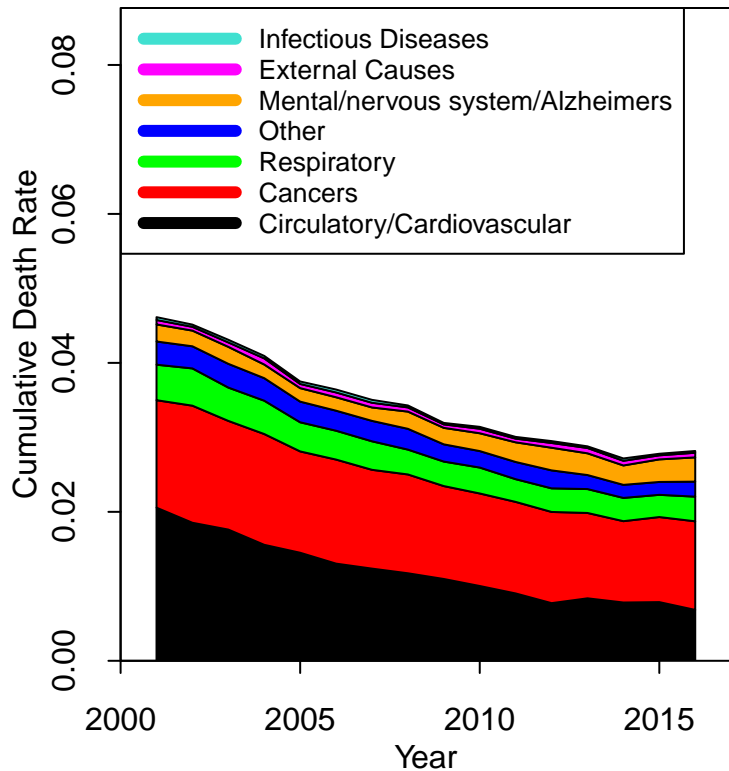
**Decomposition of Death Rates for
Males Aged 65–69
Income Deprivation Decile 10**



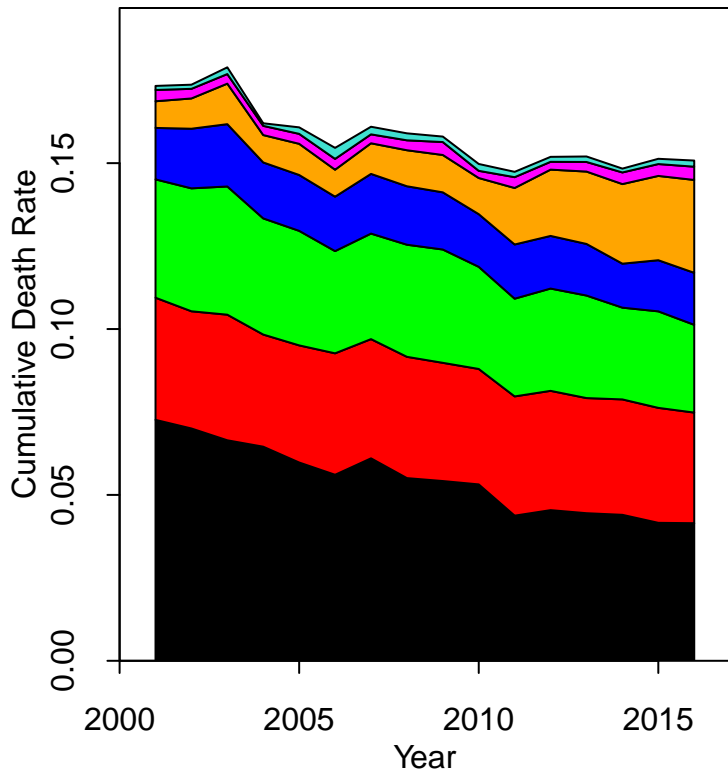
**Decomposition of Death Rates for
Males Aged 75–79
Income Deprivation Decile 1**



**Decomposition of Death Rates for
Males Aged 75–79
Income Deprivation Decile 10**



**Decomposition of Death Rates for
Males Aged 85–89
Income Deprivation Decile 1**



**Decomposition of Death Rates for
Males Aged 85–89
Income Deprivation Decile 10**

