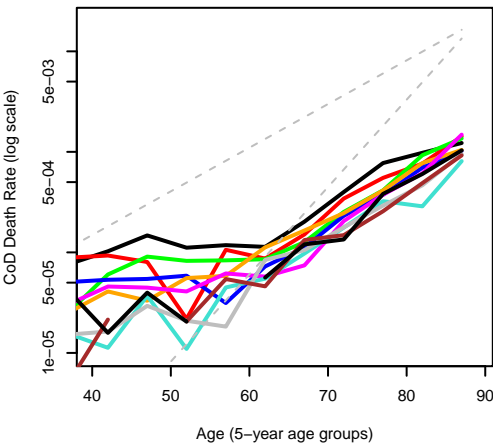
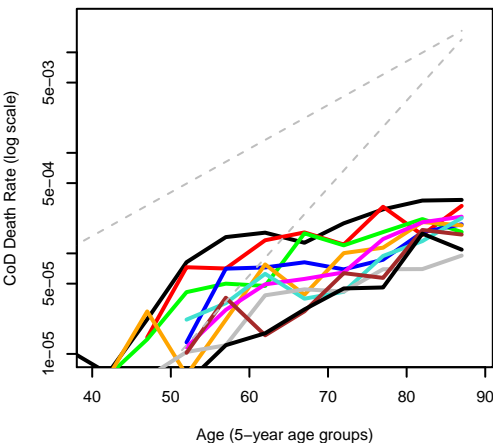


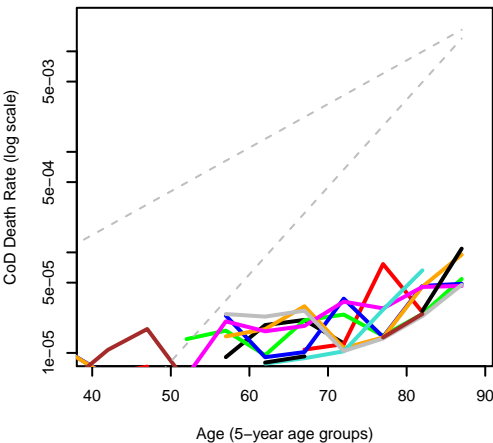
Males 2001
Infectious diseases



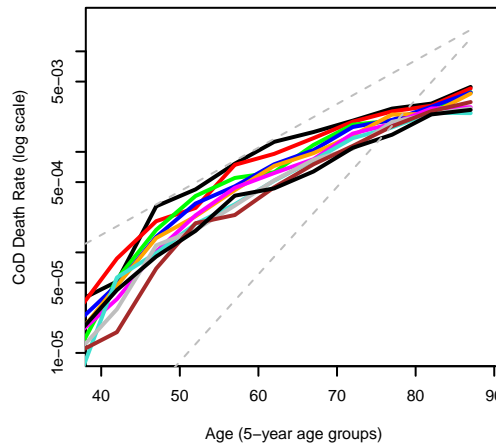
Males 2001
Cancer: larynx



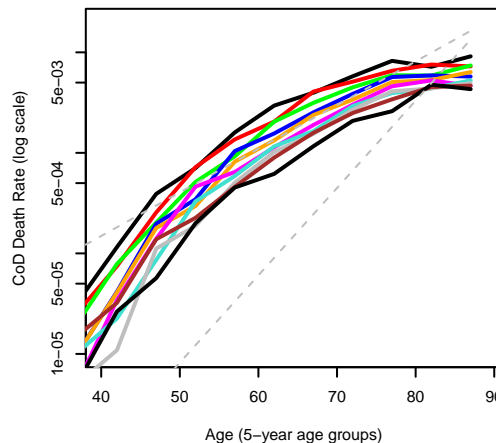
Males 2001
Cancer: other male genital



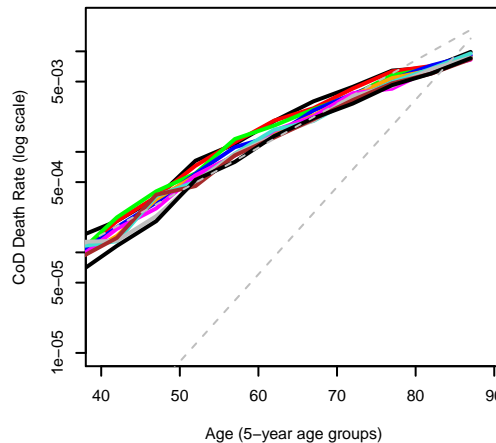
Males 2001
Cancer: oesophagus, stomach



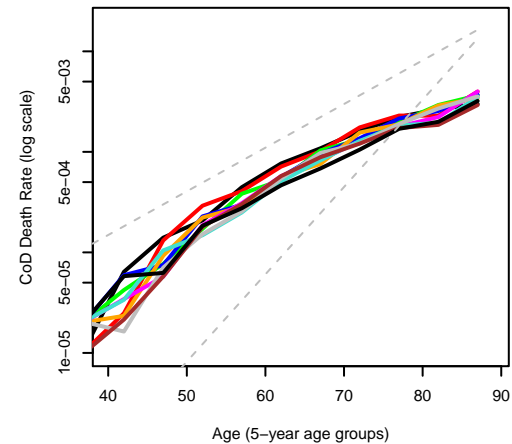
Males 2001
Cancer: lungs



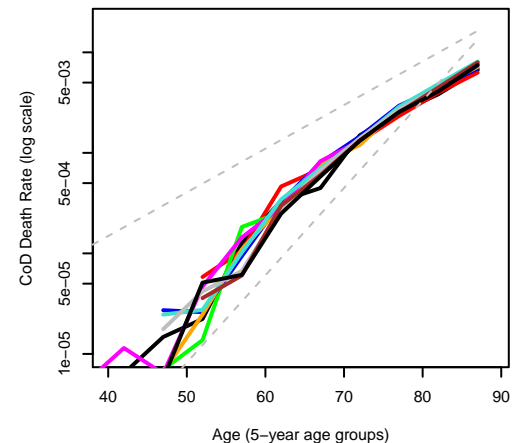
Males 2001
Cancer: skin, bones, internal organs



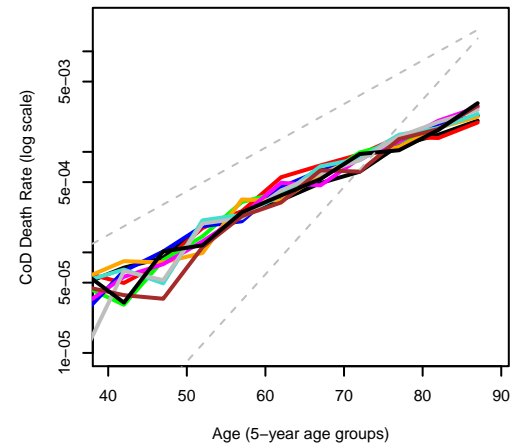
Males 2001
Cancer: bowel, gut



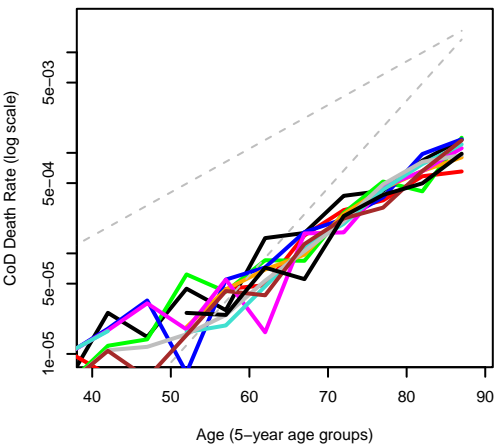
Males 2001
Cancer: prostate



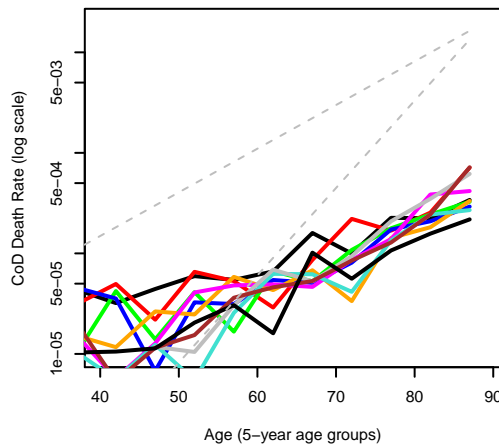
Males 2001
Cancer: lymphatic, myeloma, leukaemia



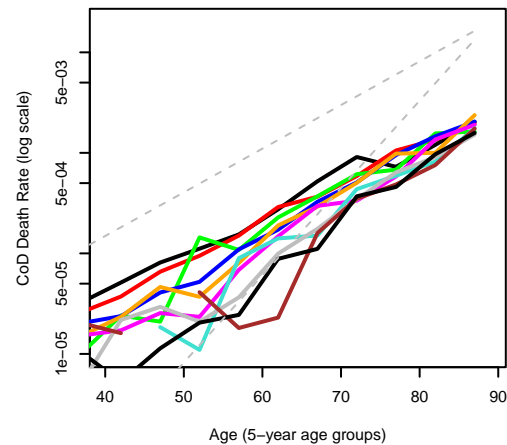
Males 2001
Benign tumours



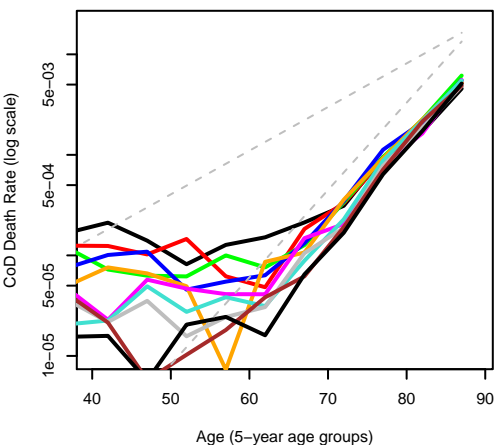
Males 2001
Diseases in blood and blood-forming organs



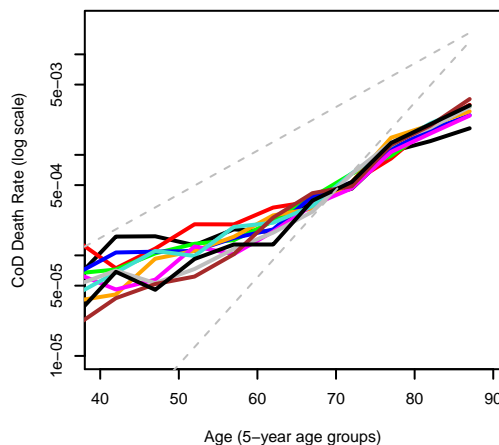
Males 2001
Diabetes



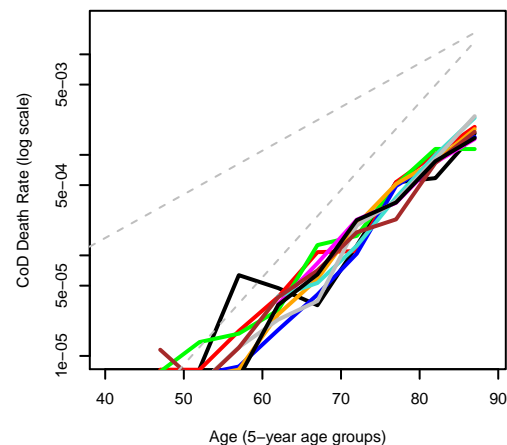
Males 2001
Mental illnesses, dementia



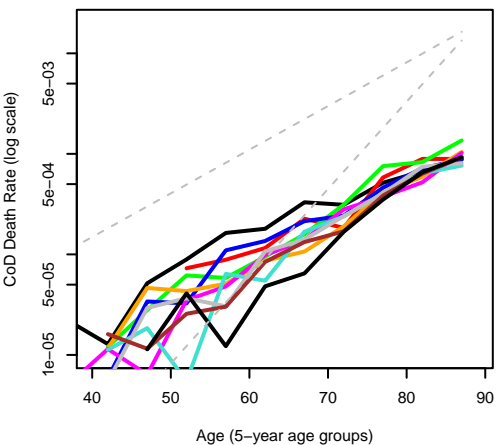
Males 2001
Diseases of nervous system excl. Alzheimer's



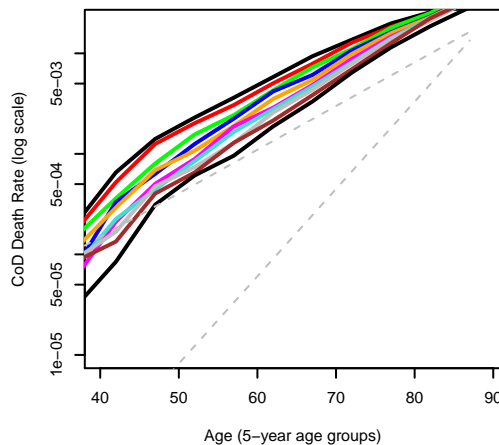
Males 2001
Alzheimer's Disease



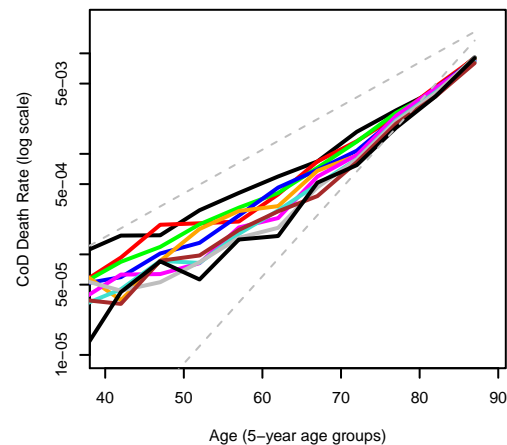
Males 2001
Increased blood pressure or rheumatic fever



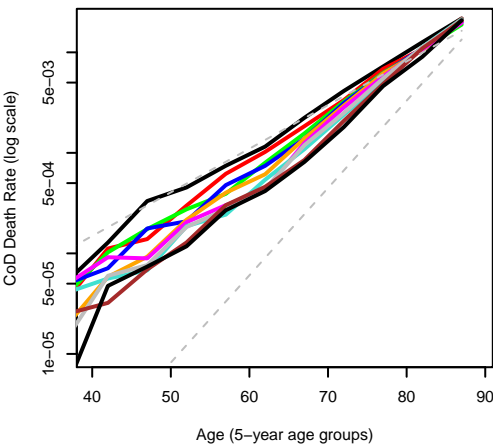
Males 2001
Ischaemic heart diseases



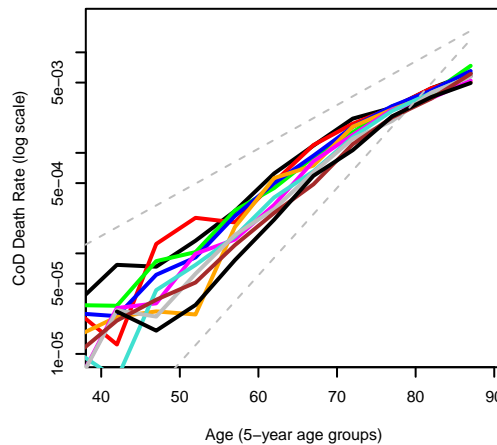
Males 2001
Other heart diseases



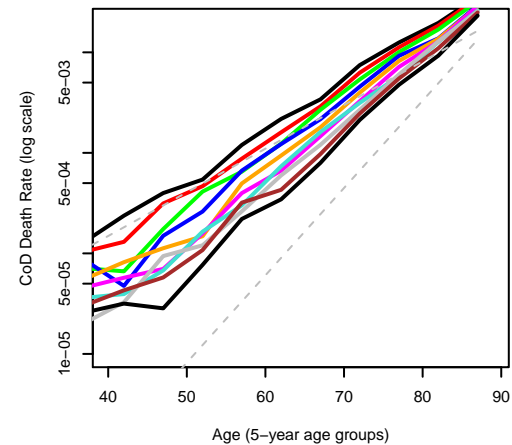
Males 2001
Cerebrovascular diseases



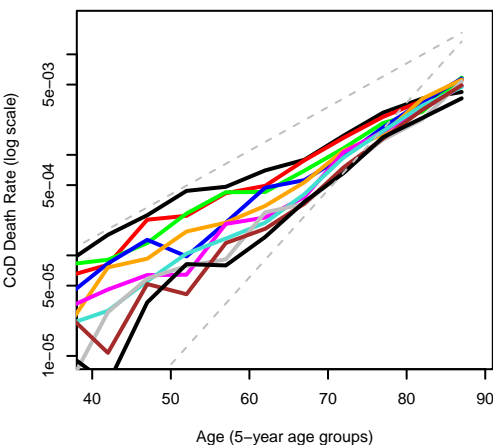
Males 2001
Circulatory diseases



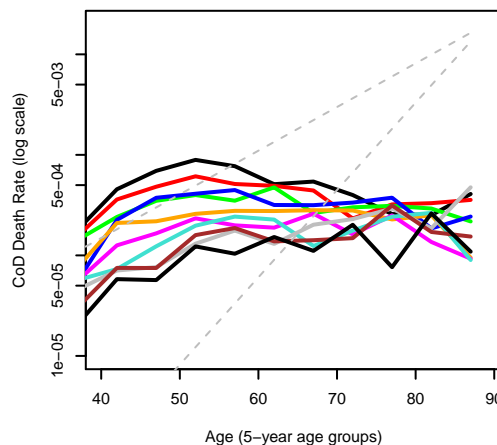
Males 2001
Respiratory diseases



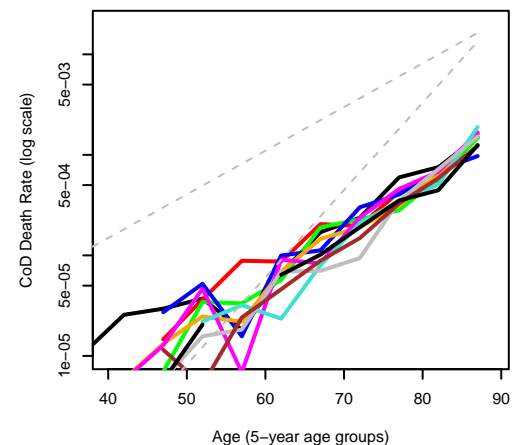
Males 2001
Digestive diseases
excl. alcohol-related disease



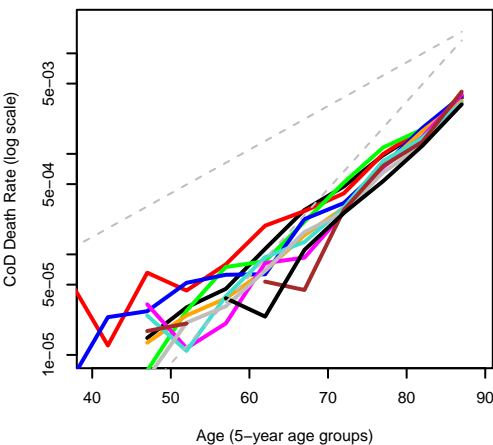
Males 2001
Alcohol related liver disease



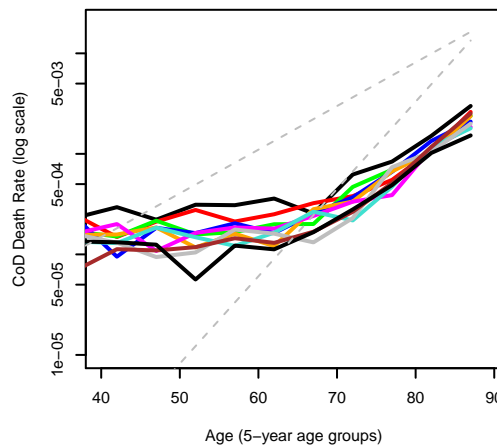
Males 2001
Diseases in skin, bones,
and connective tissue



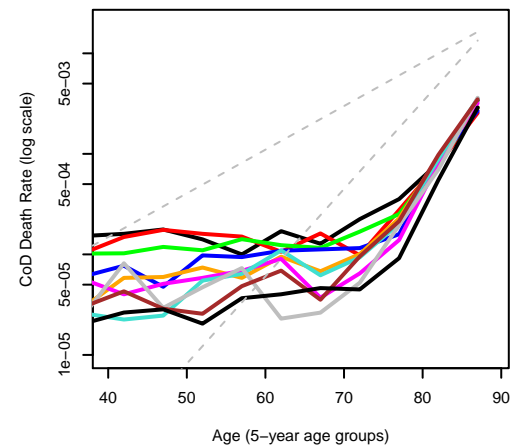
Males 2001
Genitourinary diseases



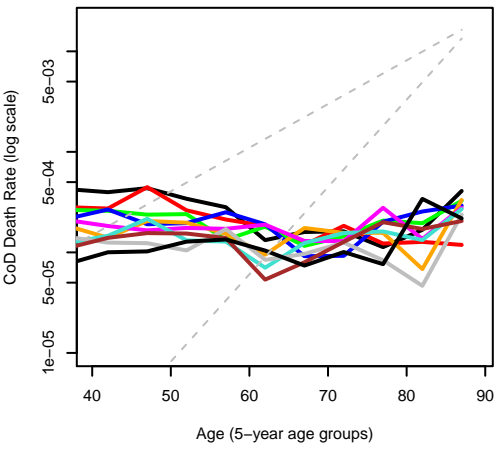
Males 2001
Road and other accidents



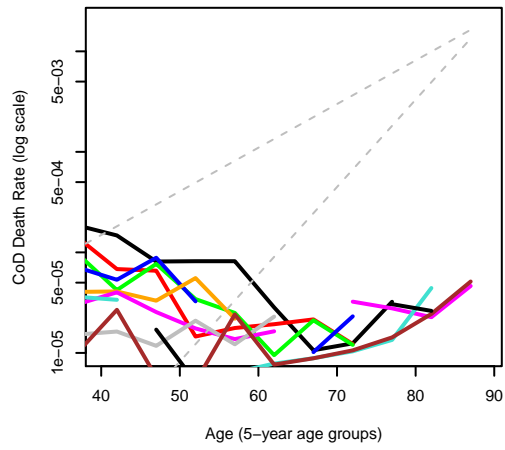
Males 2001
Other causes of death



**Males 2001
Suicide**

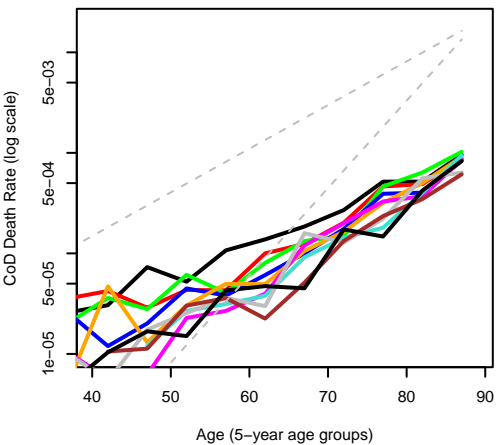


**Males 2001
Accidental poisonings**



Females 2001

Infectious diseases

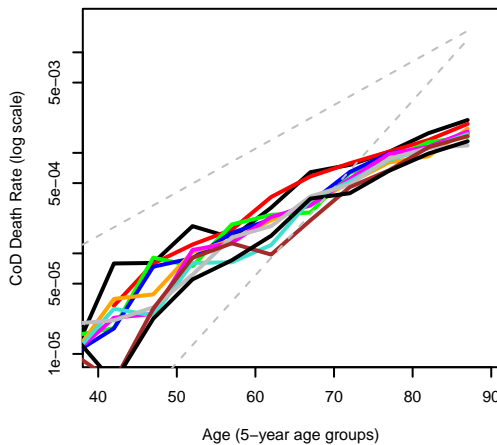


Age (5-year age groups)

Females 2001
Cancer: larynx

Females 2001

Cancer: oesophagus, stomach

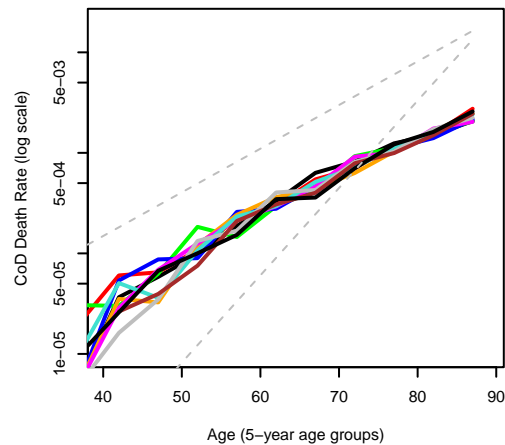


Age (5-year age groups)

Females 2001
Cancer: lungs

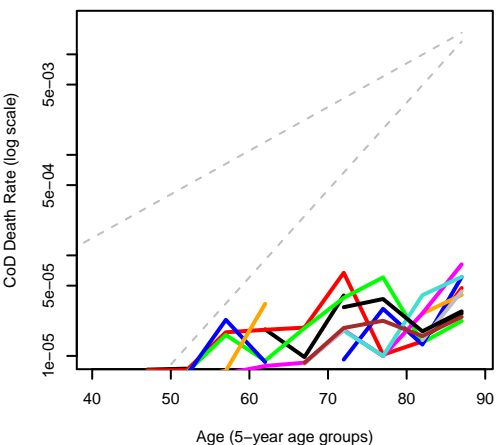
Females 2001

Cancer: bowel, gut



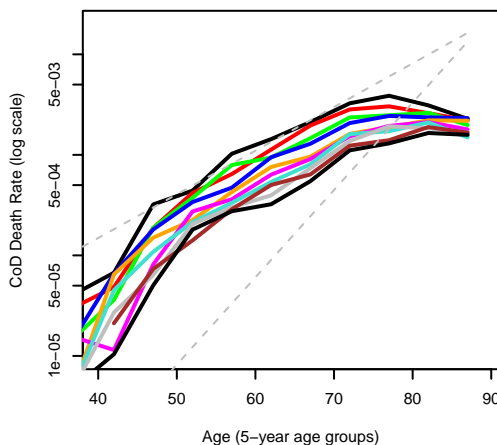
Age (5-year age groups)

Females 2001
Cancer: breast



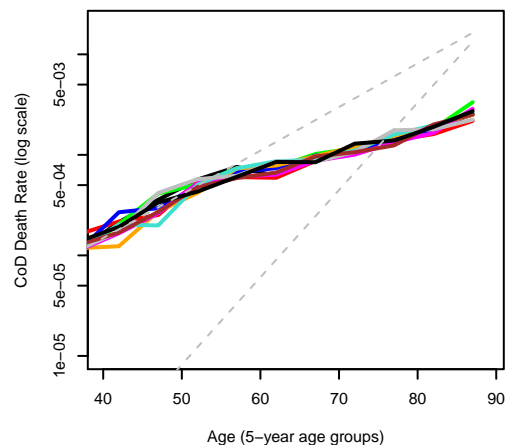
Age (5-year age groups)

Females 2001
Cancer: uterus, cervix



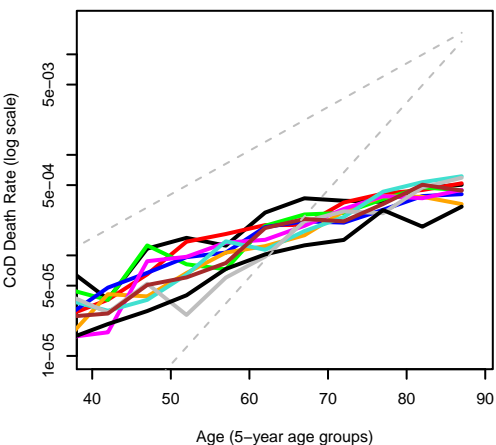
Age (5-year age groups)

Females 2001
Cancer: ovary

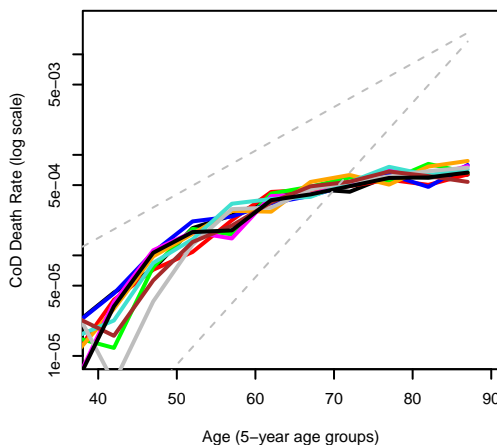


Age (5-year age groups)

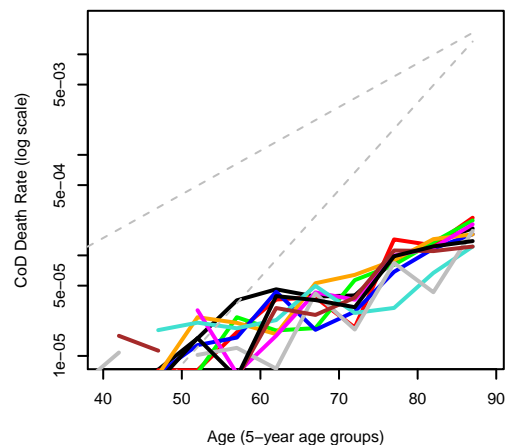
Females 2001
Cancer: other female genital



Age (5-year age groups)



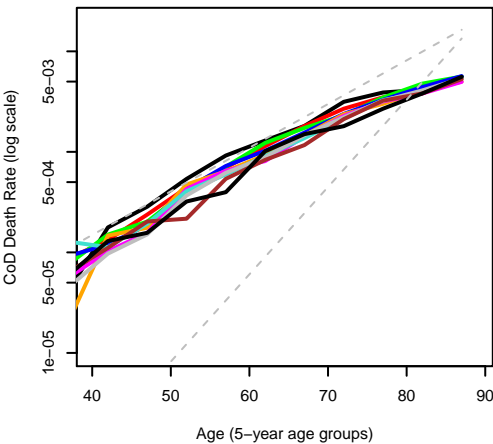
Age (5-year age groups)



Age (5-year age groups)

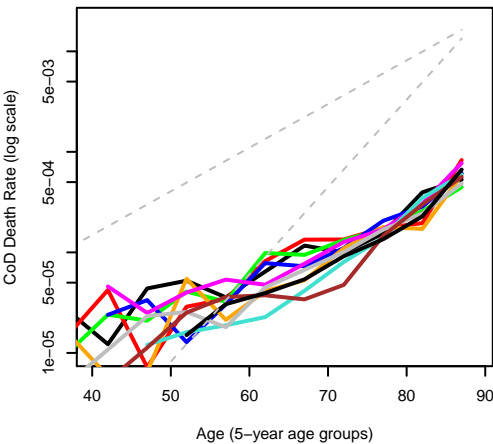
Females 2001

Cancer: skin, bones, internal organs



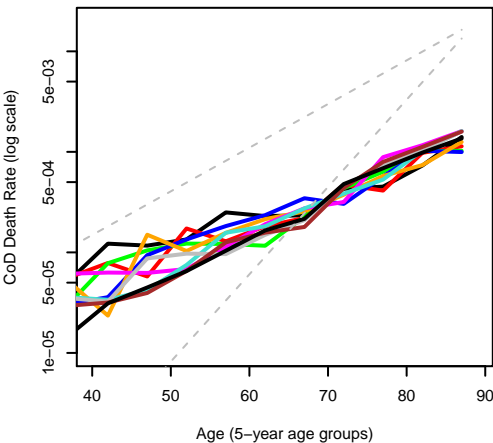
Age (5-year age groups)

Females 2001
Diseases in blood and
blood-forming organs



Age (5-year age groups)

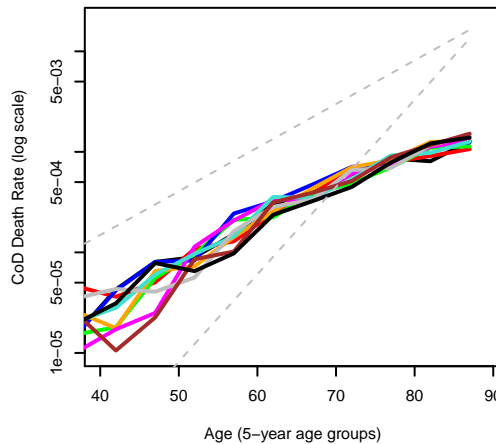
Females 2001
Diseases of nervous system
excl. Alzheimer's



Age (5-year age groups)

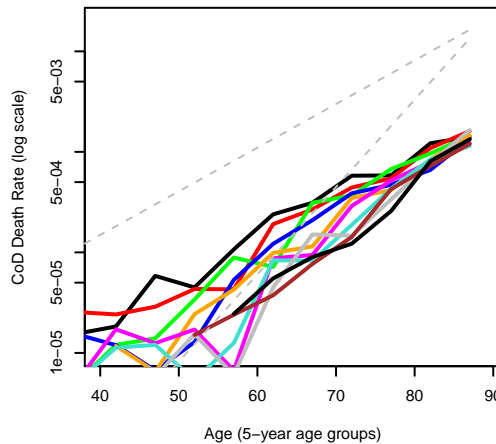
Females 2001

Cancer: lymphatic, myeloma, leukaemia



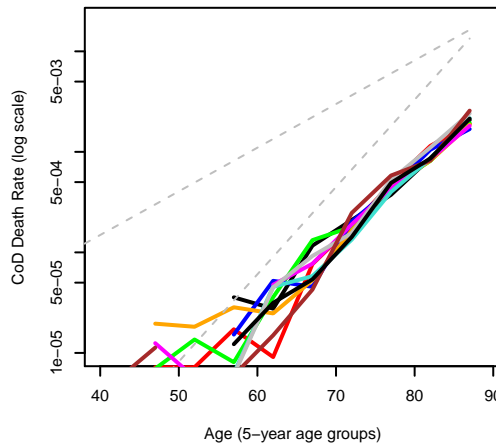
Age (5-year age groups)

Females 2001
Diabetes



Age (5-year age groups)

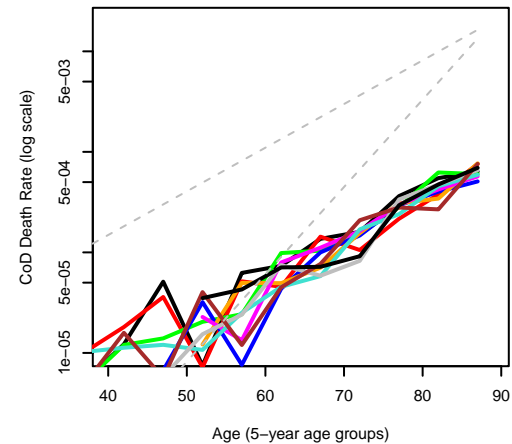
Females 2001
Alzheimer's Disease



Age (5-year age groups)

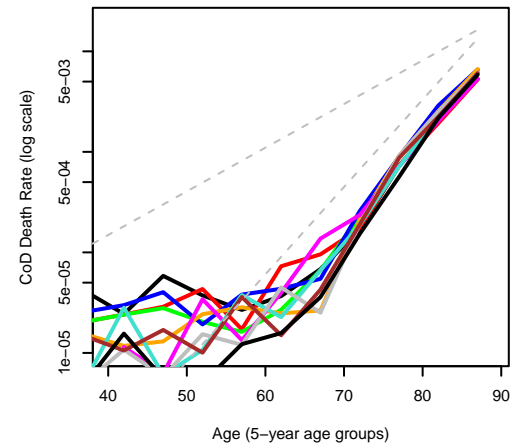
Females 2001

Benign tumours



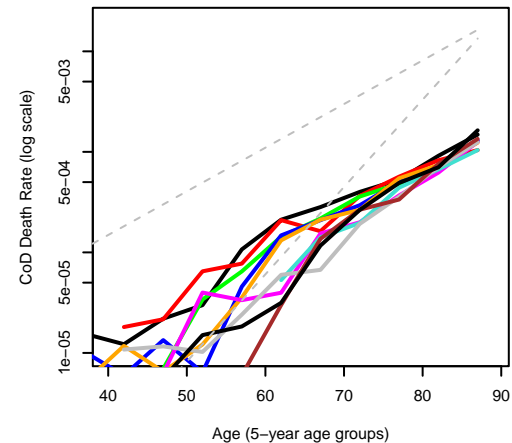
Age (5-year age groups)

Females 2001
Mental illnesses, dementia



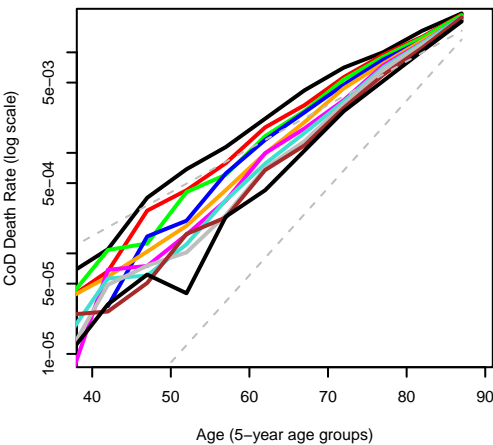
Age (5-year age groups)

Females 2001
Increased blood pressure
or rheumatic fever



Age (5-year age groups)

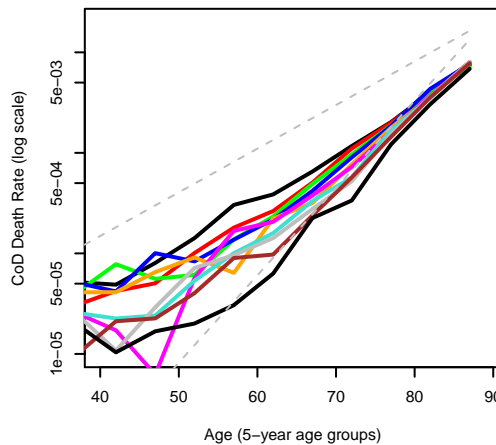
Females 2001
Ischaemic heart diseases



Age (5-year age groups)

Females 2001
Circulatory diseases

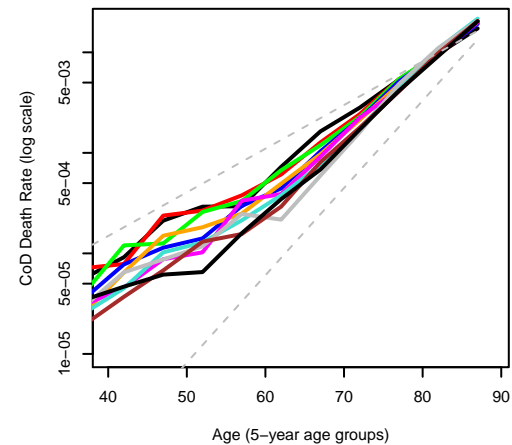
Females 2001
Other heart diseases



Age (5-year age groups)

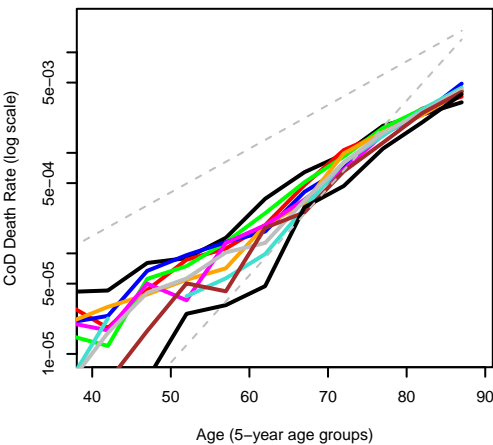
Females 2001
Respiratory diseases

Females 2001
Cerebrovascular diseases



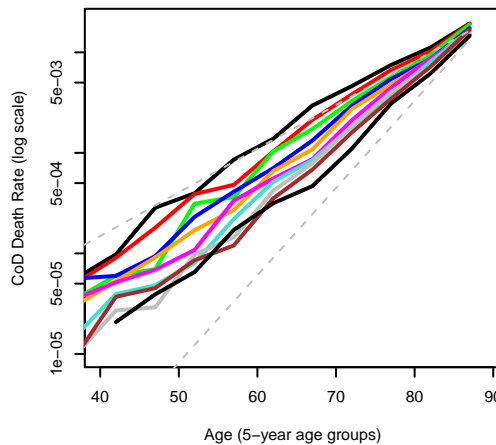
Age (5-year age groups)

Females 2001
Digestive diseases
excl. alcohol-related disease



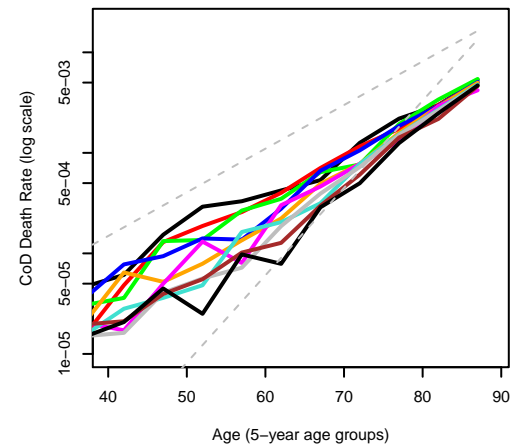
Age (5-year age groups)

Females 2001
Alcohol related liver disease



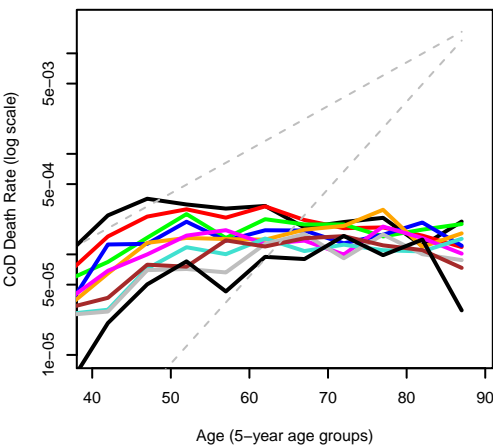
Age (5-year age groups)

Females 2001
Diseases in skin, bones,
and connective tissue

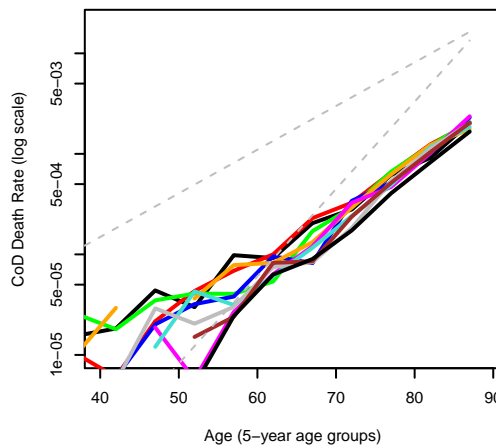


Age (5-year age groups)

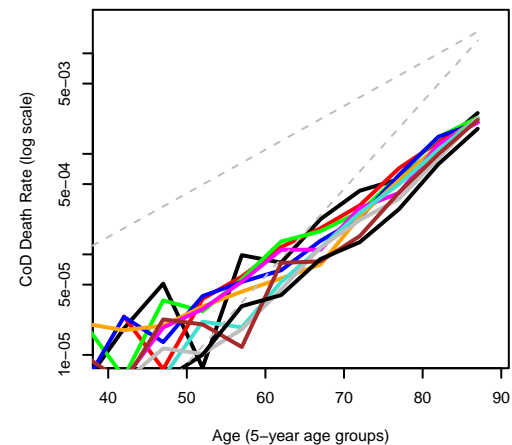
Females 2001
Genitourinary diseases



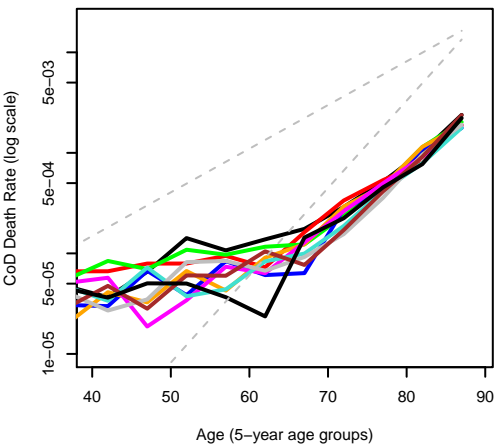
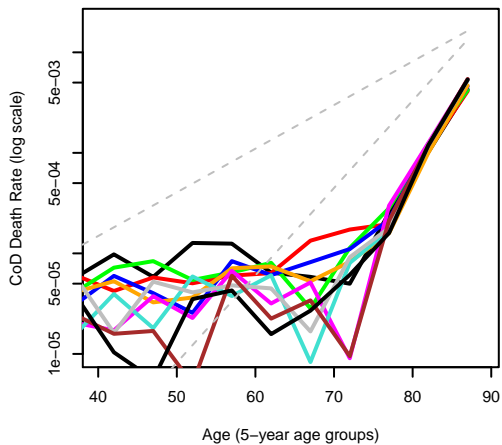
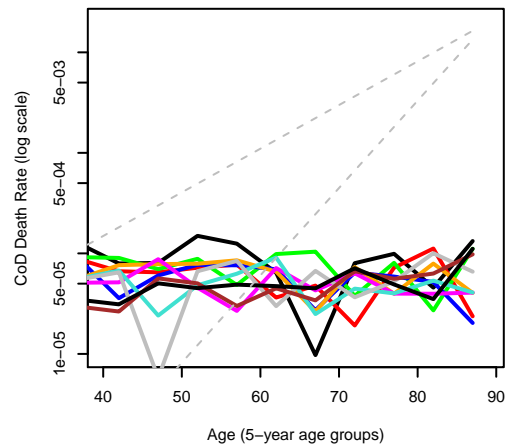
Age (5-year age groups)



Age (5-year age groups)



Age (5-year age groups)

Females 2001**Road and other accidents****Females 2001****Other causes of death****Females 2001****Suicide****Females 2001****Accidental poisonings**